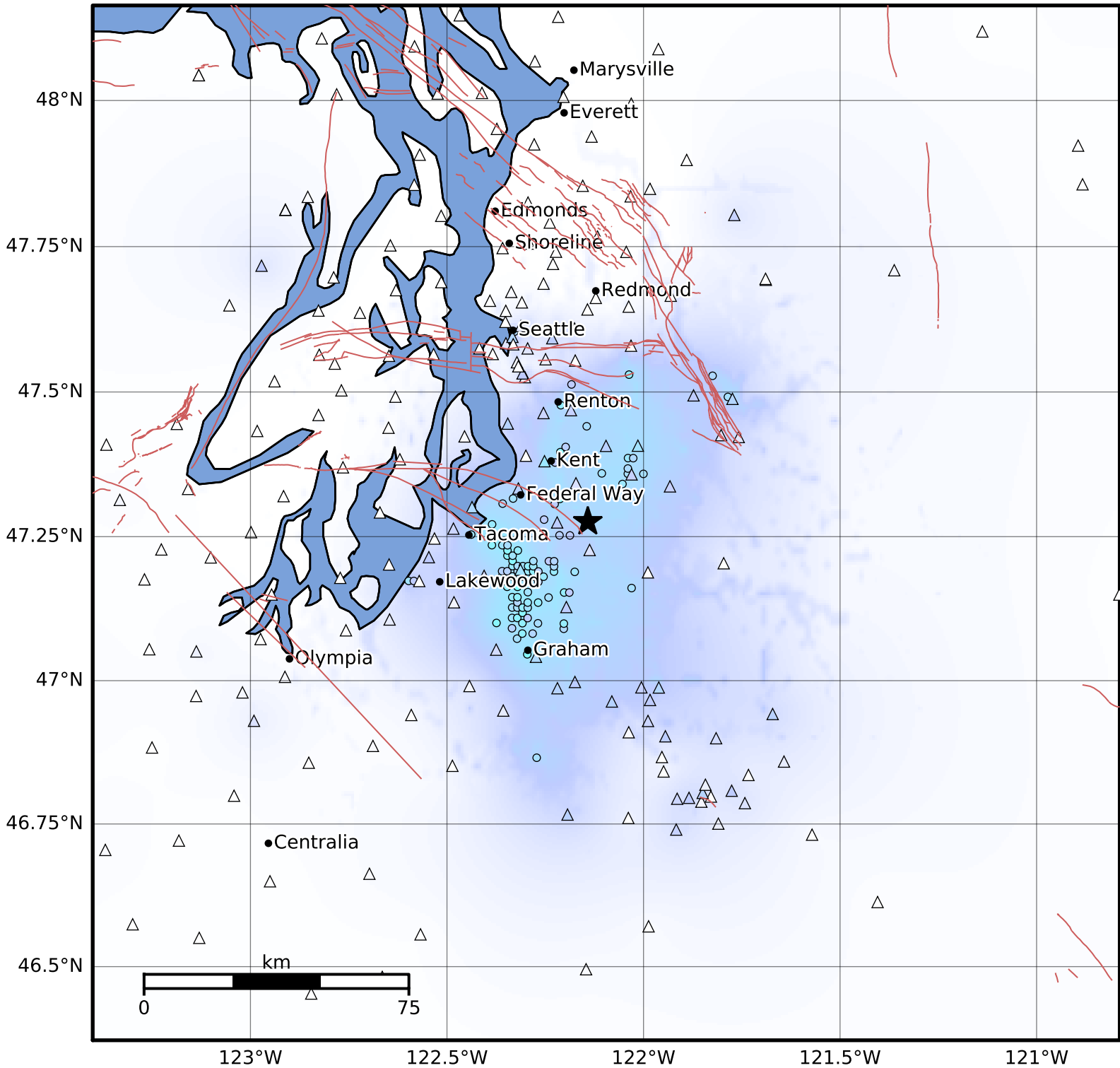


Macroseismic Intensity Map PNSN
 ShakeMap: 16.7 km (10.4 mi) SW from Maple Valley, WA
 Feb 22, 2025 11:45:29 UTC M3.4 N47.28 W122.14 Depth: 25.4km ID:uw62076946



SHAKING	Not felt	Weak	Light	Moderate	Strong	Very strong	Severe	Violent	Extreme
DAMAGE	None	None	None	Very light	Light	Moderate	Moderate/heavy	Heavy	Very heavy
PGA(%g)	<0.0464	0.297	2.76	6.2	11.5	21.5	40.1	74.7	>139
PGV(cm/s)	<0.0215	0.135	1.41	4.65	9.64	20	41.4	85.8	>178
INTENSITY	I	II-III	IV	V	VI	VII	VIII	IX	X+

Scale based on Worden et al. (2012)

Version 4: Processed 2025-02-22T20:01:06Z

△ Seismic Instrument ○ Reported Intensity

★ Epicenter