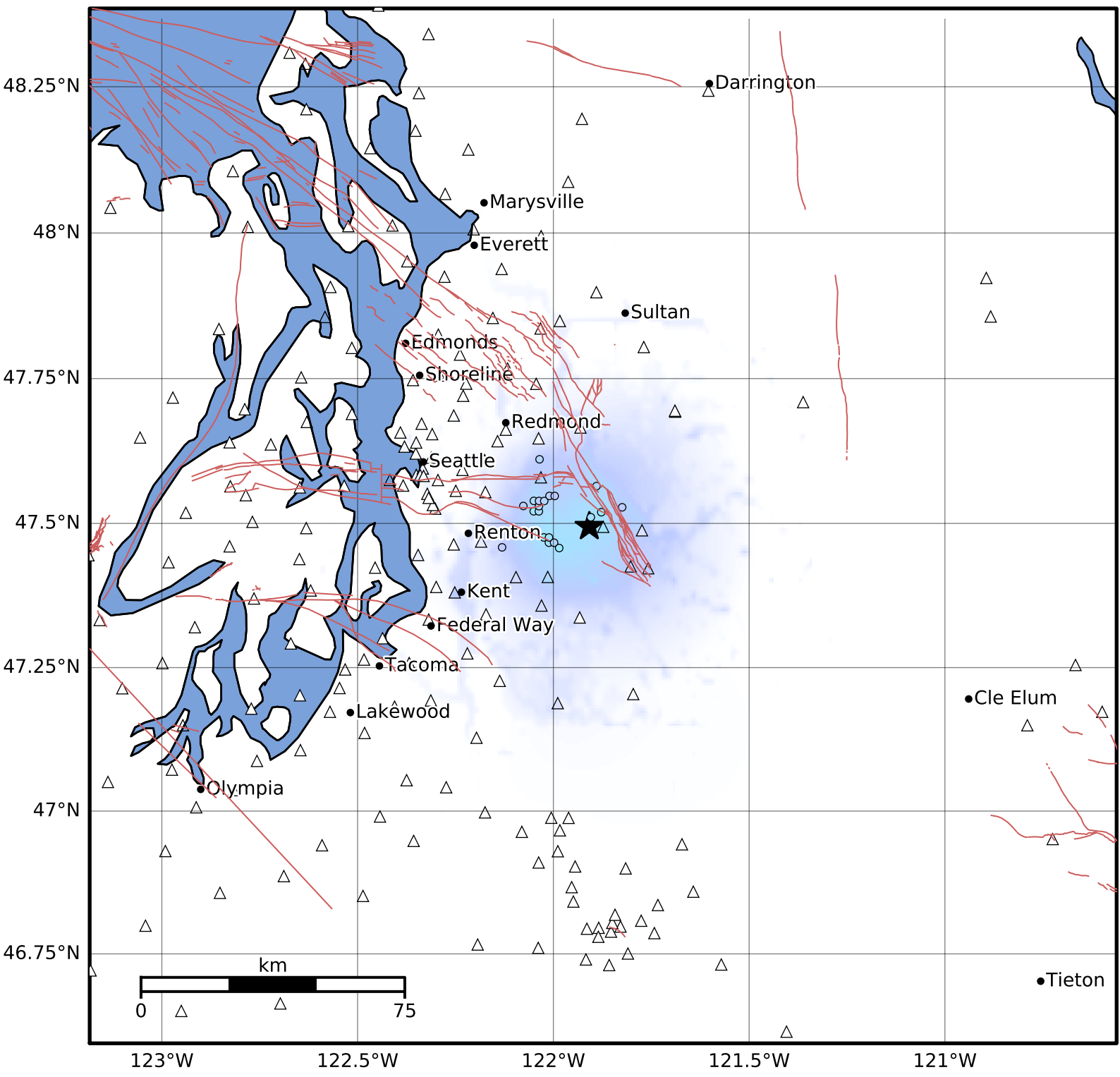


Macroseismic Intensity Map PNSN  
 ShakeMap: 8.2 km ( 5.1 mi) SSW from Fall City, WA  
 Mar 07, 2024 01:48:35 UTC M3.1 N47.49 W121.91 Depth: 12.0km ID:uw61988126



SHAKING	Not felt	Weak	Light	Moderate	Strong	Very strong	Severe	Violent	Extreme
DAMAGE	None	None	None	Very light	Light	Moderate	Moderate/heavy	Heavy	Very heavy
PGA(%g)	<0.0464	0.297	2.76	6.2	11.5	21.5	40.1	74.7	>139
PGV(cm/s)	<0.0215	0.135	1.41	4.65	9.64	20	41.4	85.8	>178
INTENSITY	<b>I</b>	<b>II-III</b>	<b>IV</b>	<b>V</b>	<b>VI</b>	<b>VII</b>	<b>VIII</b>	<b>IX</b>	<b>X+</b>

Scale based on Worden et al. (2012) Version 3: Processed 2024-03-07T19:51:08Z  
 △ Seismic Instrument    ○ Reported Intensity    ★ Epicenter