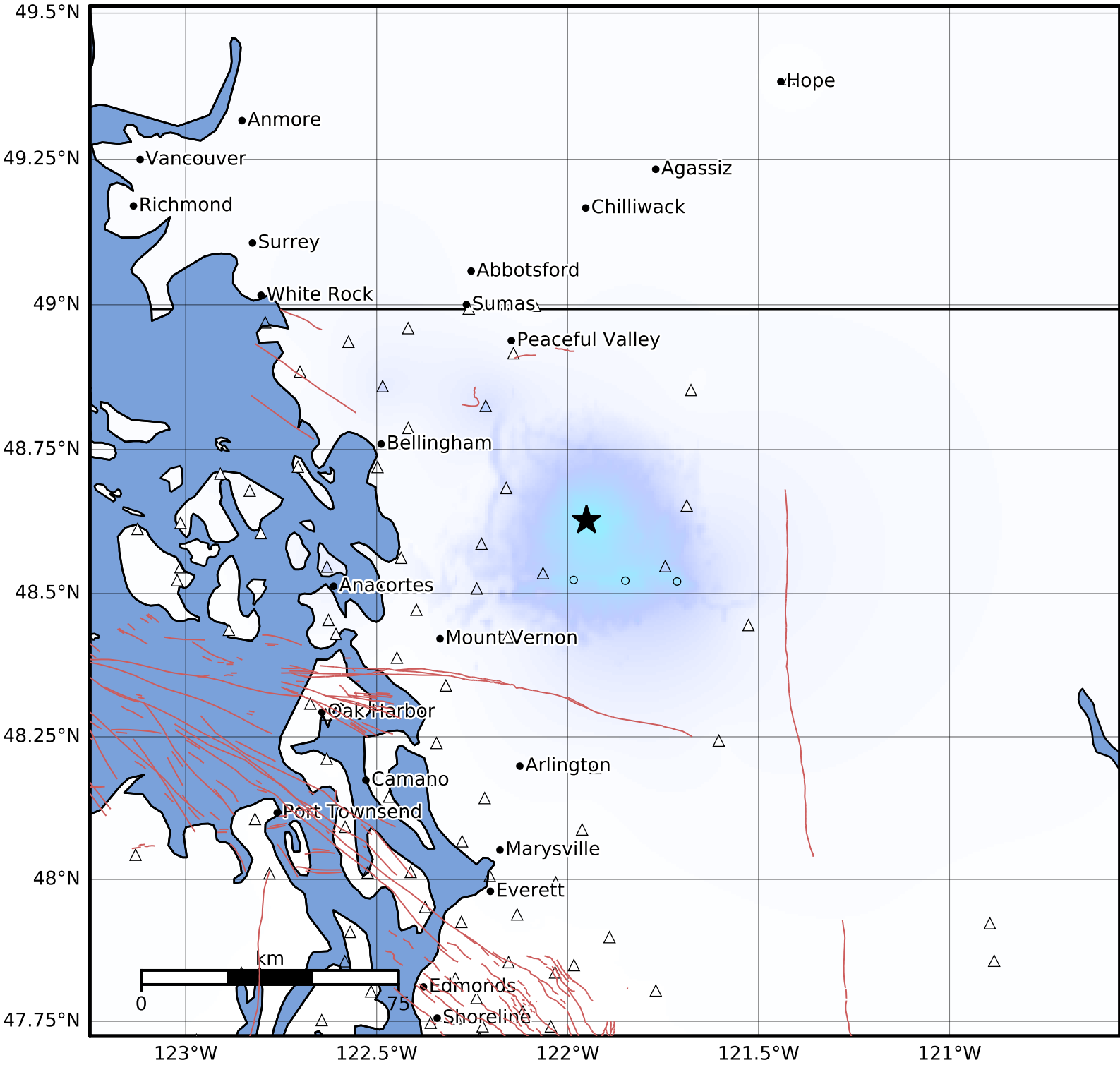


Macroseismic Intensity Map PNSN  
 ShakeMap: 17.8 km ( 11.1 mi) NW from Concrete, WA  
 Aug 06, 2023 05:16:15 UTC M2.9 N48.63 W121.95 Depth: 1.2km ID:uw61938537



SHAKING	Not felt	Weak	Light	Moderate	Strong	Very strong	Severe	Violent	Extreme
DAMAGE	None	None	None	Very light	Light	Moderate	Moderate/heavy	Heavy	Very heavy
PGA(%g)	<0.0464	0.297	2.76	6.2	11.5	21.5	40.1	74.7	>139
PGV(cm/s)	<0.0215	0.135	1.41	4.65	9.64	20	41.4	85.8	>178
INTENSITY	I	II-III	IV	V	VI	VII	VIII	IX	X+

Scale based on Worden et al. (2012)

Version 2: Processed 2023-08-08T12:04:37Z

△ Seismic Instrument ○ Reported Intensity

★ Epicenter