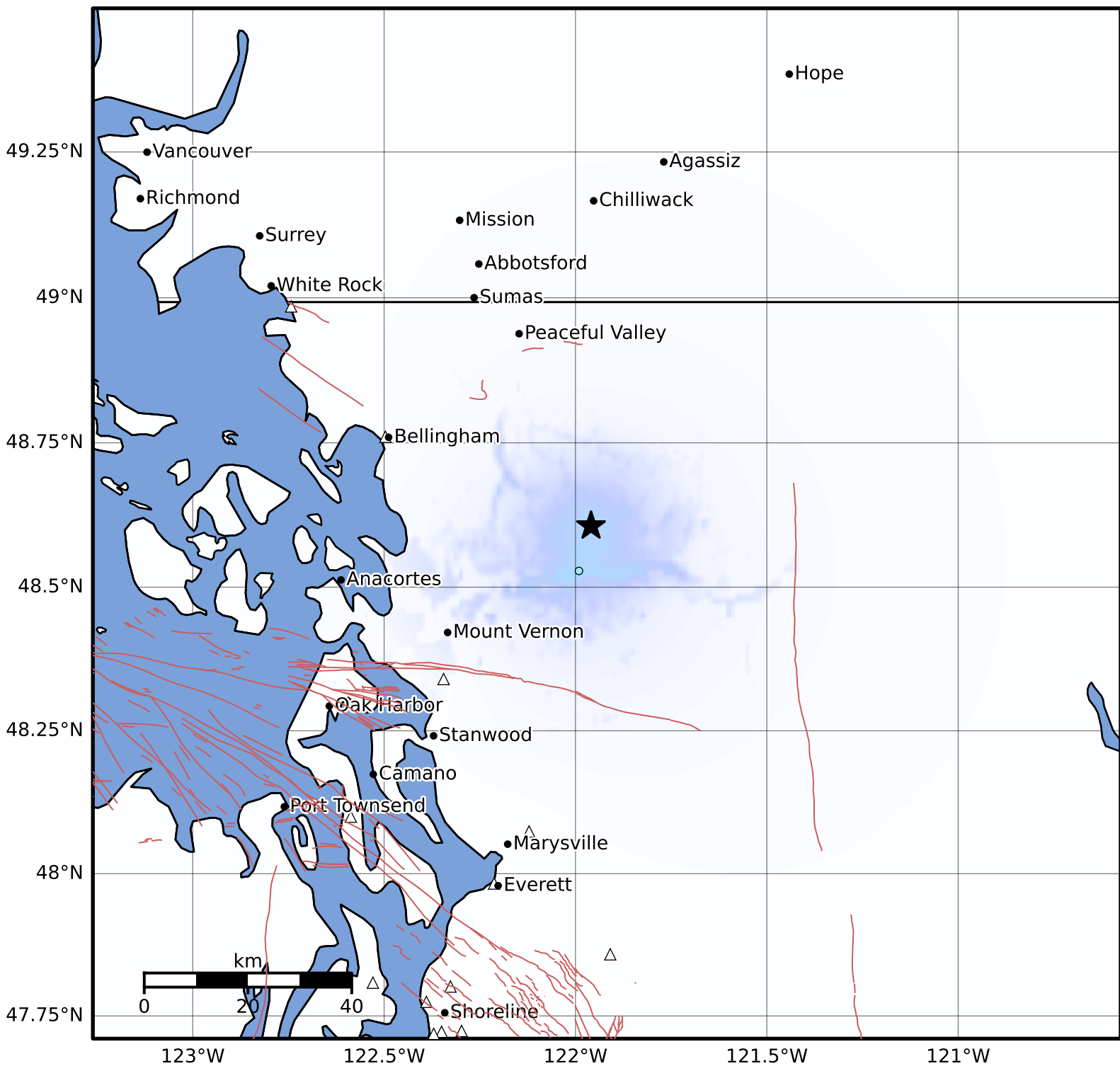


Macroseismic Intensity Map PNSN  
 ShakeMap: 17.2 km (10.7 mi) NW of Concrete, WA  
 Aug 23, 2021 22:27:26 UTC M2.8 N48.61 W121.96 Depth: 2.4km ID:61761777



SHAKING	Not felt	Weak	Light	Moderate	Strong	Very strong	Severe	Violent	Extreme
DAMAGE	None	None	None	Very light	Light	Moderate	Moderate/heavy	Heavy	Very heavy
PGA(%g)	<0.0464	0.297	2.76	6.2	11.5	21.5	40.1	74.7	>139
PGV(cm/s)	<0.0215	0.135	1.41	4.65	9.64	20	41.4	85.8	>178
INTENSITY	I	II-III	IV	V	VI	VII	VIII	IX	X+

Scale based on Worden et al. (2012)

Version 1: Processed 2025-09-14T15:49:39Z

△ Seismic Instrument ○ Reported Intensity

★ Epicenter