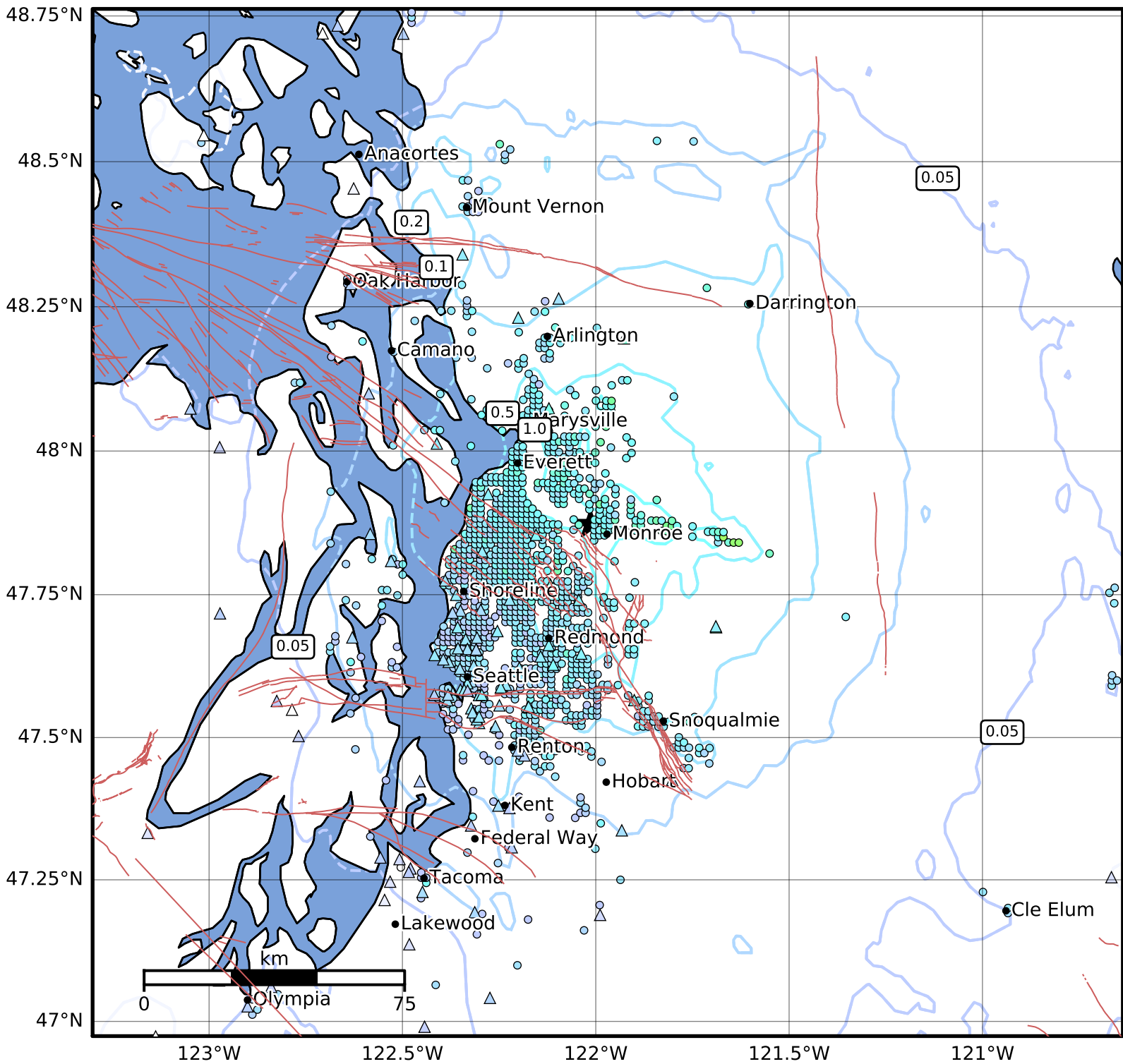


1.0 Second Peak Spectral Acceleration Map PNSN  
 ShakeMap: 3.6 km ( 2.2 mi) NW from Monroe, WA  
 Jul 12, 2019 09:51:38 UTC M4.6 N47.87 W122.01 Depth: 29.0km ID:uw61535372



SA(1.0) (%g)	0.1	0.2	0.5	1	2	5	10	20	50	100	200
--------------	-----	-----	-----	---	---	---	----	----	----	-----	-----

Scale based on Worden et al. (2012)

Version 1: Processed 2023-08-17T18:39:22Z

△ Seismic Instrument ○ Reported Intensity

★ Epicenter