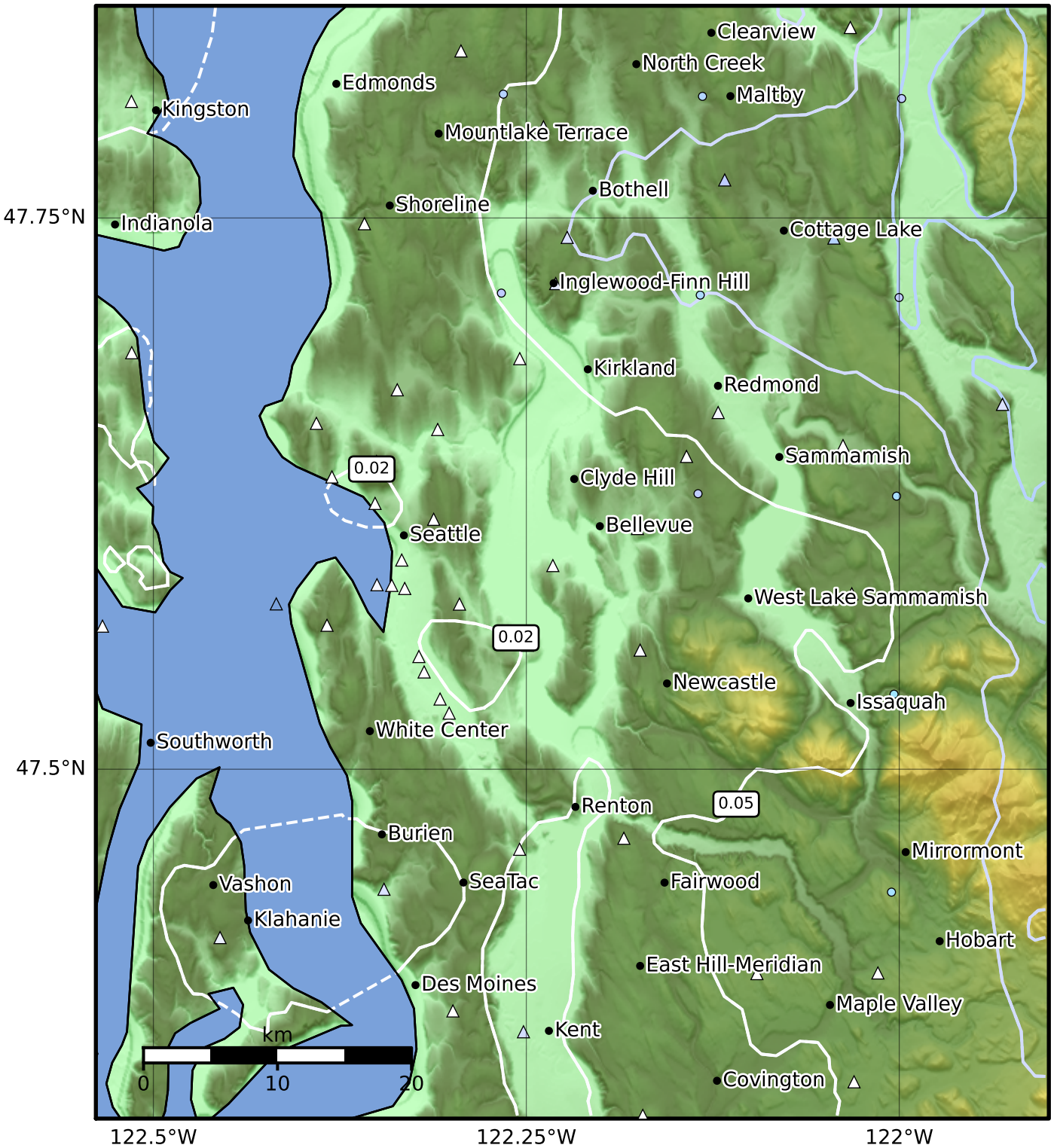


Peak Ground Acceleration Map PNSN  
 ShakeMap: 14.0 km ( 8.7 mi) E from Carnation, WA  
 Feb 22, 2024 13:02:49 UTC M3.4 N47.67 W121.73 Depth: 18.6km ID:uw61984016



| PGA (%g) | 0.1 | 0.2 | 0.5 | 1 | 2 | 5 | 10 | 20 | 50 | 100 | 200 |
|----------|-----|-----|-----|---|---|---|----|----|----|-----|-----|
|----------|-----|-----|-----|---|---|---|----|----|----|-----|-----|

Scale based on Worden et al. (2012)

Version 2: Processed 2024-02-22T18:48:58Z

△ Seismic Instrument    ○ Reported Intensity    ★ Epicenter