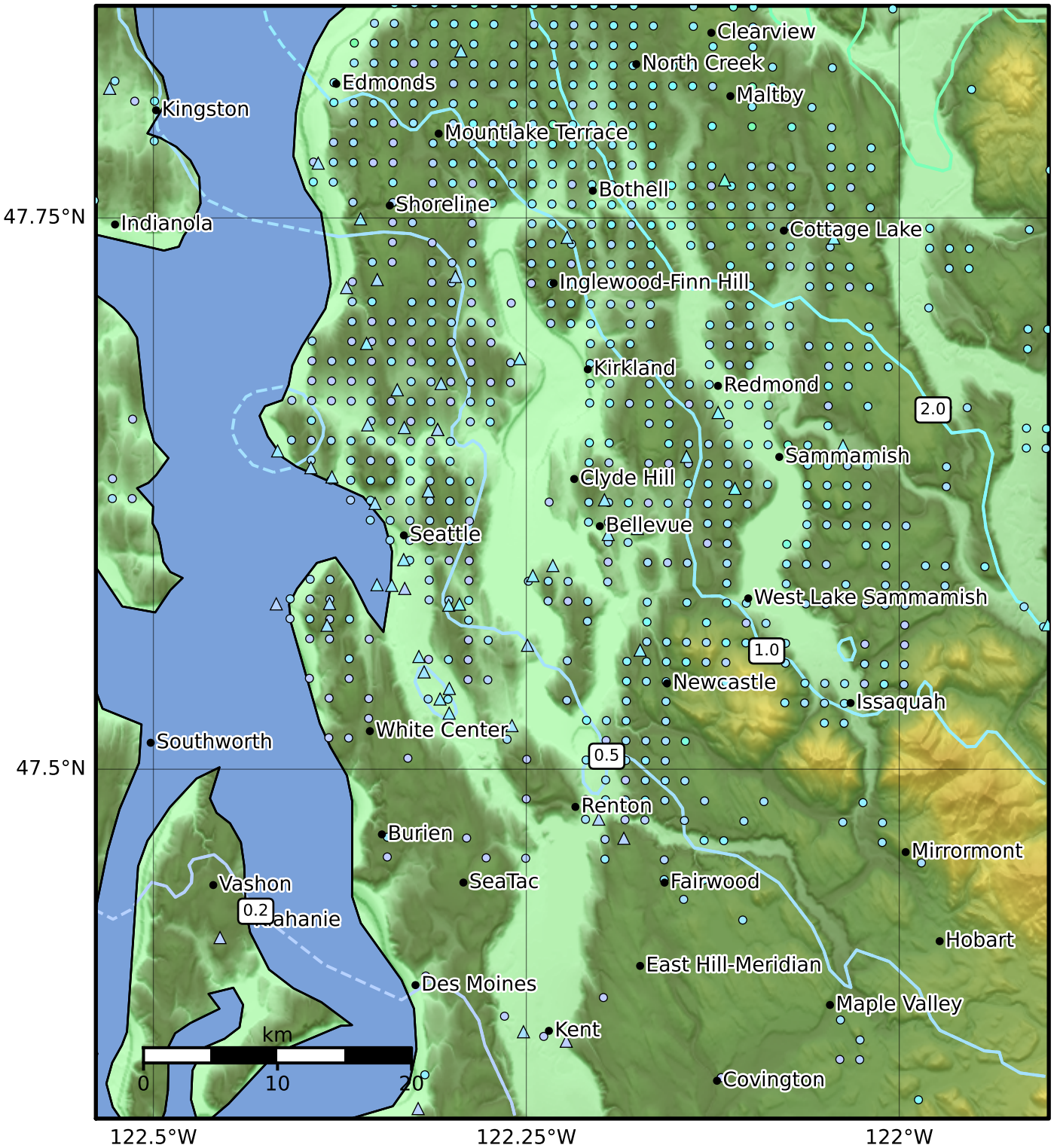


Peak Ground Acceleration Map PNSN
 ShakeMap: 3.6 km (2.2 mi) NW from Monroe, WA
 Jul 12, 2019 09:51:38 UTC M4.6 N47.87 W122.01 Depth: 29.0km ID:uw61535372



PGA (%g) 0.1 0.2 0.5 1 2 5 10 20 50 100 200

Scale based on Worden et al. (2012) Version 1: Processed 2023-08-17T18:38:21Z

△ Seismic Instrument ○ Reported Intensity ★ Epicenter