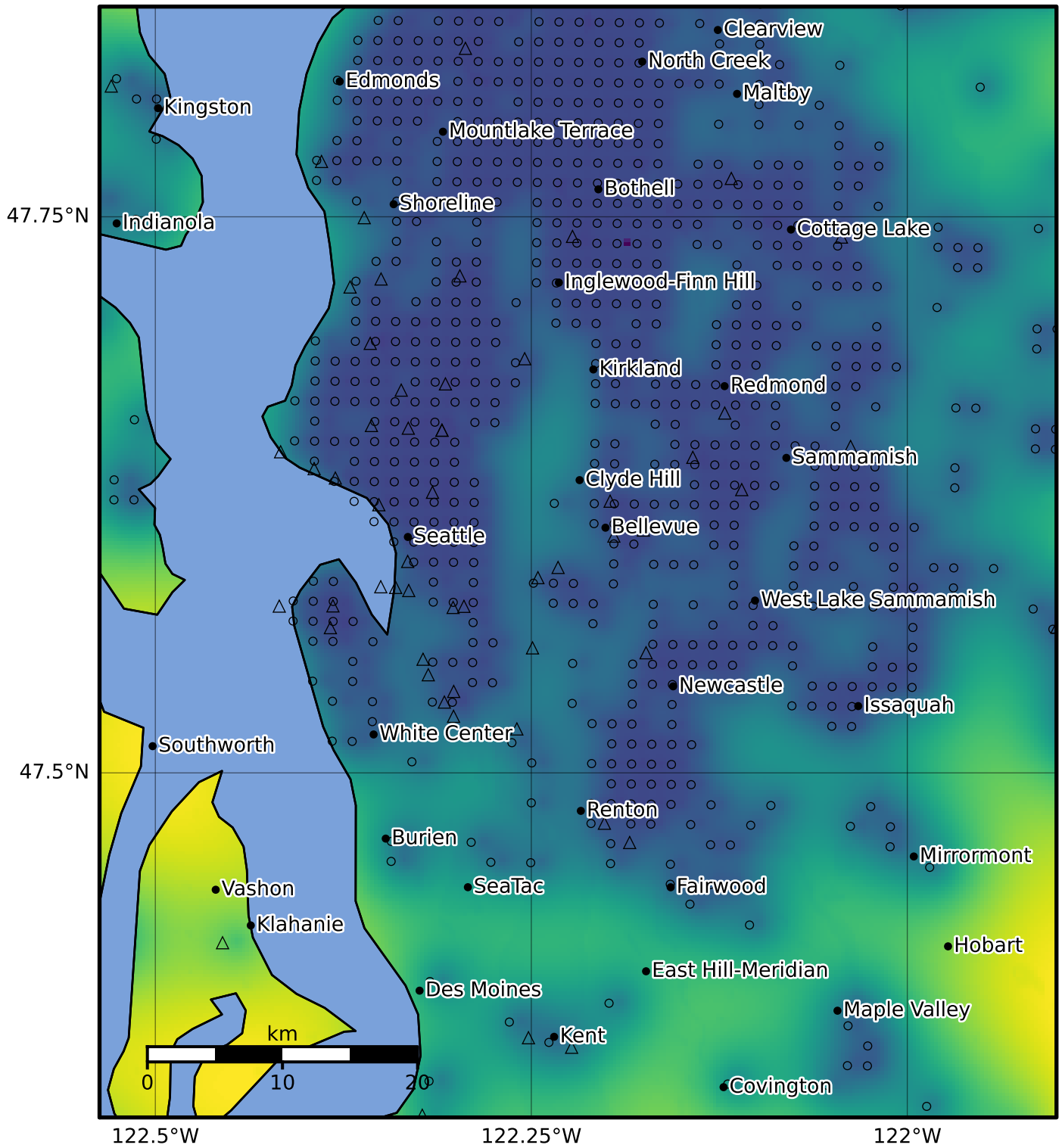


Macroseismic Intensity Map PNSN  
Uncertainty ShakeMap: 3.6 km ( 2.2 mi) NW from Monroe, WA  
Jul 12, 2019 09:51:38 UTC M4.6 N47.87 W122.01 Depth: 29.0km ID:uw61535372



Version 1: Processed 2023-08-17T18:38:21Z

