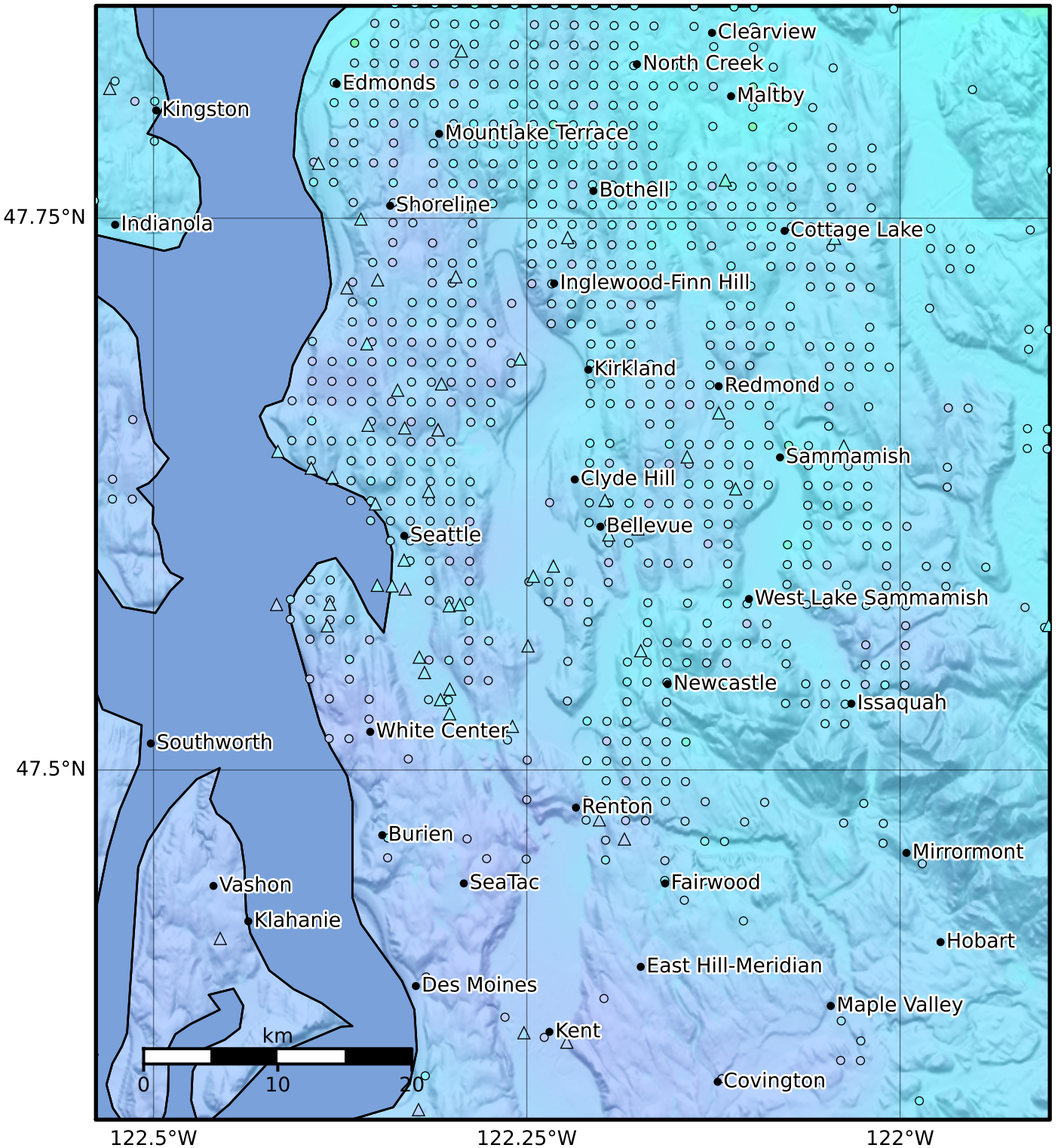


Macroseismic Intensity Map PNSN
 ShakeMap: 3.6 km (2.2 mi) NW from Monroe, WA
 Jul 12, 2019 09:51:38 UTC M4.6 N47.87 W122.01 Depth: 29.0km ID:uw61535372



SHAKING	Not felt	Weak	Light	Moderate	Strong	Very strong	Severe	Violent	Extreme
DAMAGE	None	None	None	Very light	Light	Moderate	Moderate/heavy	Heavy	Very heavy
PGA(%g)	<0.0464	0.297	2.76	6.2	11.5	21.5	40.1	74.7	>139
PGV(cm/s)	<0.0215	0.135	1.41	4.65	9.64	20	41.4	85.8	>178
INTENSITY	I	II-III	IV	V	VI	VII	VIII	IX	X+

Scale based on Worden et al. (2012)

Version 1: Processed 2023-08-17T18:38:21Z

△ Seismic Instrument ○ Reported Intensity

★ Epicenter