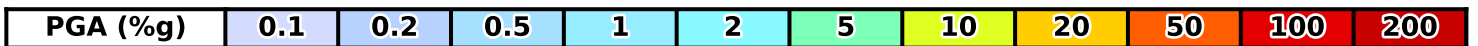
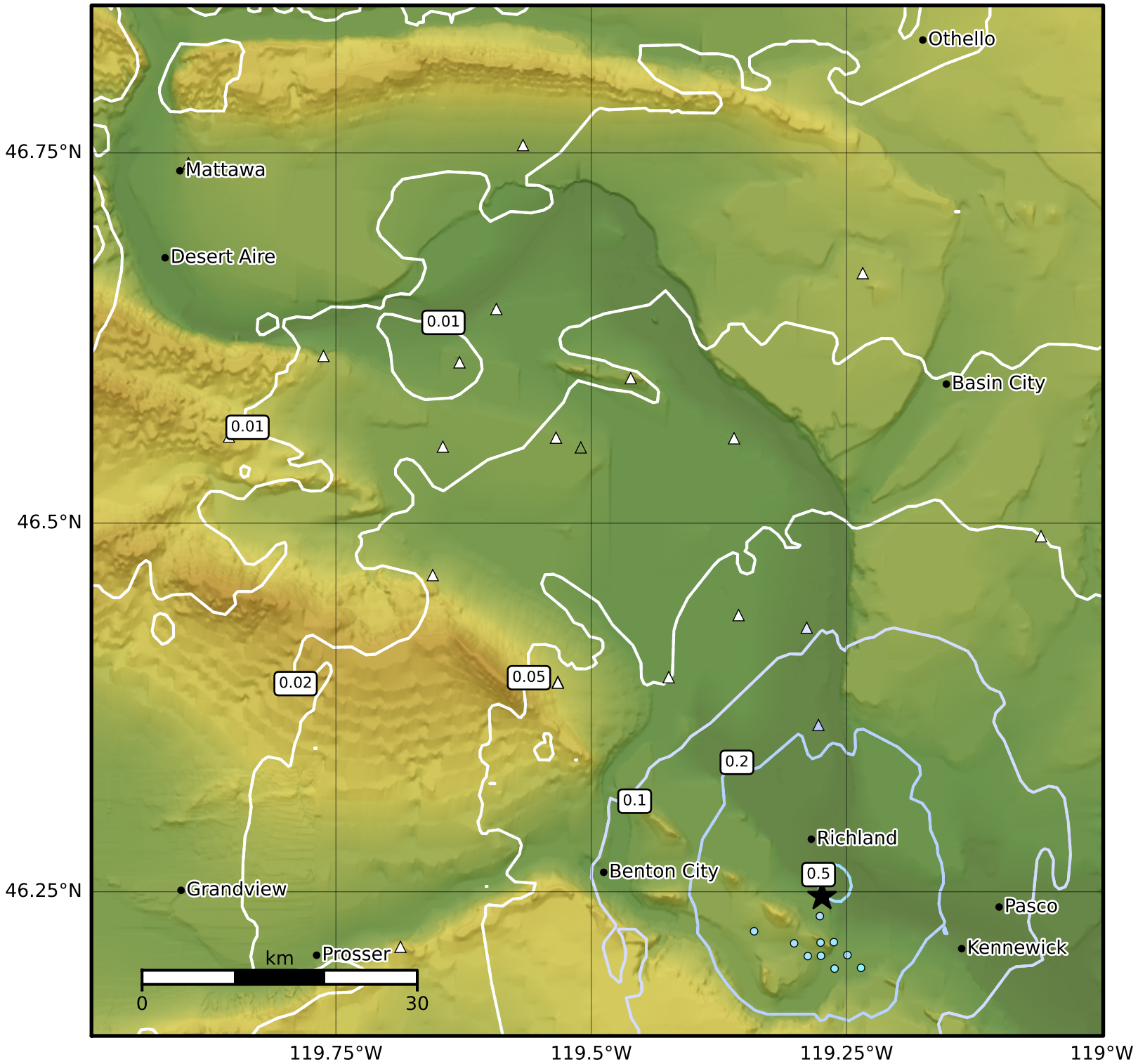


Peak Ground Acceleration Map PNSN  
 ShakeMap: 4.3 km ( 2.7 mi) S from Richland, WA  
 Apr 20, 2024 04:18:57 UTC M2.7 N46.25 W119.27 Depth: 8.0km ID:uw61998221



Scale based on Worden et al. (2012)

Version 1: Processed 2024-04-20T04:44:34Z

△ Seismic Instrument ○ Reported Intensity

★ Epicenter